



ANNUAL REPORT 2021

CONNECTION

A YEAR IN REVIEW

Why Connection?

We are so excited to share with you our second comprehensive annual report.

Our 2020–21 year was one of continued improvement and change, despite and alongside a full year of challenges we all experienced together due to COVID-19.

When our board and team had a chance to reflect on what was absolutely key this last year, one word resonated loud and clear – CONNECTION.

We are so thankful for the CONNECTION we share with community, organizations, funders, donors, services, and supporters.

Seeing the CONNECTION grow between our moms and their little ones because of your support is a privilege for which we are eternally grateful.

With heartfelt thanks,
from all of us at Emma Maternity House Society

Our Vision

Healthy Mothers and Babies Living in Community

Our Mission

To provide housing and support for pregnant women and youth experiencing or at risk of homelessness; empowering them to move out of vulnerability and into a healthy and sustainable life for them and their child.

Our Purpose

We exist to create transformative change for expectant mothers and their babies, their families, and our shared communities.

In partnership with our members, volunteers, and donors, and guided by our faith, we disrupt cycles of poverty and trauma by creating a sense of home and belonging and empowering women to thrive in community.

FROM OUR BOARD PRESIDENT

This past year, though challenging, was a good one for Emma Maternity House Society in many ways. Faithfully, our donors stood firm and showed their continued support throughout this COVID-19 season.

We saw 11 moms and 11 babies helped in-house and we connected with 32 alumni moms and 51 babies and children in the community.

Over the past two years, we have made several successive progressions that have brought increased capacity, program growth, and development, and excellent advancement through the goals and objectives set out in our Strategic Plan.

We dedicated much time to updating operations and governance policies, roles and practices this past year and look forward to a year that sees continued growth in services and a review and renewal of our strategic path forward. Advancing social policy, equity, and access to services and supports for expectant youth, women, and their babies is of vital importance.

I wish to personally extend my sincere gratitude to our strong dedicated board, our leadership and staff and to all donors, volunteers, and supporters without whom these achievements would not have been possible.



KERRY LITSCHKE
President | Board of Directors

FROM OUR EXECUTIVE DIRECTOR

It is a privilege to reflect on a year that has taught us so much about the importance of CONNECTION.

From our cherished ties to our supporters in community and vital interagency relationships to the unity of a dedicated team of remarkable supportive people, we see the incredible value of CONNECTION. We all come together to provide the very best care, life skills education & opportunities for the women and babies who call Emma House home. We are blessed to see, as a result, the most beautiful healthy CONNECTION forming – between our moms and babies, as they grow and develop into healthy thriving young families ready for successful transitions into community.

This past year was one of strong growth for Emma House. We are deeply grateful to have shared our story and the work we do with the broader community and to communicate the great need for access, supports and services for expectant homeless and at-risk youth and women. As a result, we have expanded our funding base and engaged stakeholders across sectors in order to provide comprehensive wrap-around supports addressing the unique needs of each of our moms and babies.

Recognizing the dire shortage of safe, appropriate and affordable housing options for our residents and little ones, we have extended the time moms and babies can stay here at Emma House. Building skills, and pursuing educational goals vastly improve the opportunities for sustainable success in community. Early childhood development is also essential and Emma House is grateful for new support that allows us to create programs from birth through to toddlerhood.

Focusing forward, we are excited to embark on the challenges of our third year of strategic planning, including renewal of short and long term goals and a way forward that continues to see advances in both equity and access to services for the vulnerable population we serve.

Thank you for being such an incredible part of our journey and Emma House story.



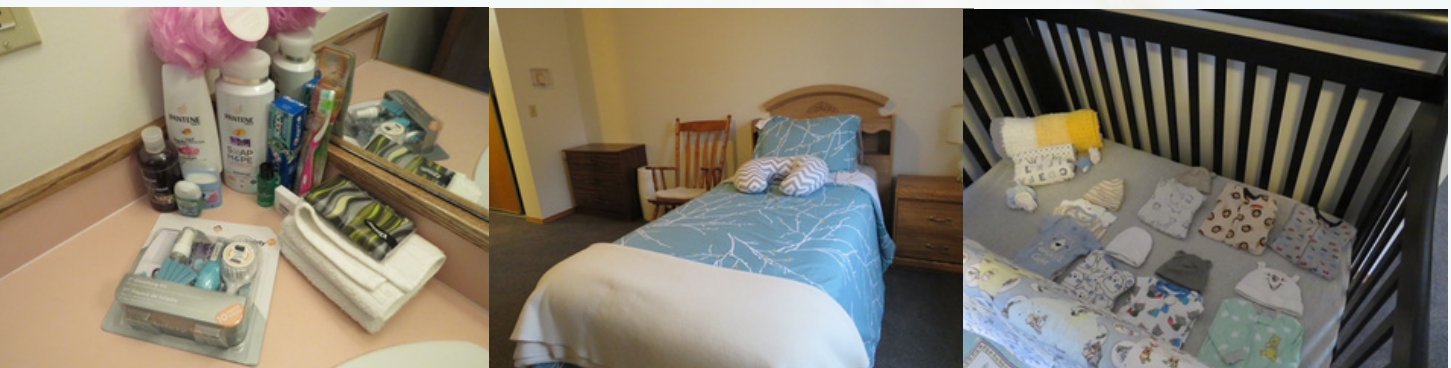
DEANNA BRANSON
Executive Director

A PLACE TO CALL HOME

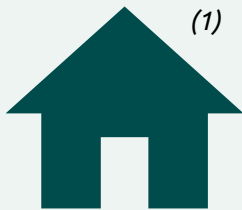
At Emma House, our residents come from a variety of different cultures, backgrounds and experiences. Some of our residents are fleeing domestic violence and sexual exploitation, while others may have a history of addictions or poor mental health, and are experiencing chronic or episodic homelessness.

When an expectant mom arrives at Emma House, they are welcomed with their own bedroom and bathroom, furnished with a bed, dressers, crib, changing table, and all the necessities they require to care for themselves and their little one. Once a resident is settled, the Emma House Team works to connect our mom with the unique support and resources they need to overcome stigma, barriers, trauma, and homelessness.

At Emma House, our residents receive a safe and family-like environment, 24/7 trauma-informed care, case management support, life skills education, and other necessities. Since our doors opened in 1992, Emma House has helped break the cycle of homelessness for over 180 moms (& their little ones) in Alberta. In 2020-21, 8 moms and babies successfully transitioned out of Emma House and are now thriving in community.



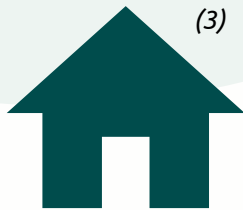
DID YOU KNOW



Over 5,700 Albertans are currently experiencing homelessness



Family Violence affects 237 victims per 100,000 people annually



1 in 4 single-mother households experiences food insecurity



46% of Canadians aged 15 and up reported poor mental health during the COVID-19 pandemic

Sources:

1: <https://calgary.citynews.ca/2021/09/21/calgary-homeless-palliative-care/>

2: <https://www.homelesshub.ca/about-homelessness/homelessness-101/causes-homelessness>

3: <https://cpj.ca/report/poverty-trends-2020/>

4: <https://www150.statcan.gc.ca/n1/pub/82-003-x/2020004/article/00003-eng.htm>



DID YOU KNOW



19 women, youth, and babies received housing, life skills education & supports at Emma House this past fiscal year



6,320 meals were provided to Emma House Residents



192 group Life Skills classes were delivered at Emma House



Emma House reached out in support to 32 moms and 51 babies in community and referred over 170 women to essential and emergency supports

Z VOLUNTEER SPOTLIGHT

We are so thankful for all our Emma House Volunteers. Without these incredible, dedicated partners in community, we would not be able to make such a meaningful impact in the lives of the mothers and babies we support through the Emma House program.

One of the very important volunteer roles within this program is our Mentoring Mom program. When a new expectant resident begins her journey with us, Emma House works to build natural supports in community – our Mentoring Moms are key natural supports in community. Each of these carefully selected volunteers are matched with one of our in-house moms, and a meaningful and lasting relationship is forged with where advice, moral support, friendship, and connection grows – first with our expectant mom and then with mom and her baby.

MEET COLETTE SCHOUTEN

Collette describes herself as a busy mom of 5 kids, ranging in age from 8 to 15 years old. She and her husband are big believers in giving back to community, with the philosophy that everyone has something to offer. With family a top priority, Collette enjoys spending time with her kids, coaching teens and volunteering in the school library. A lover of learning and reading, she really enjoys researching and choosing new books for the library that will expand the minds of young learners. Collette has a great sense of humour and a passion to serve with joy.

Collette always thought it would be very rewarding to help pregnant women. She had an understanding for the stress and loneliness our moms might experience and wanted to make a difference.

Initially, looking to help with meals, it was a Mentoring Mom role Collette would first take on. While pushing her out of her comfort zone she found she really enjoyed this role. This amazing volunteer remarks she has learned a lot from her Emma House resident mom.

Despite our resident's traumatic history, seeing the capacity of forgiveness and the intrinsic importance of family in this resident has been very impactful.

In her journey with this mom and little one since November 2019, some favourite times include shopping together, visits at Emma House and walks to the park. Seeing the connection and bond grow between our resident and her daughter have been especially heartwarming for Collette, as well as seeing the joy this mother and baby find in everyday simple things.

Collette sees a long-term relationship continuing to grow with our resident after her transition to community and aspires to see greater success and educational opportunities that will aid in independence and in modeling to her little one the values of hard work, perseverance and resilience.

We are blessed to have you with us Collette.

Our deepest gratitude.



EDUCATIONAL CONNECTIONS

This year, we had the privilege of hosting 30 practicum students from 14 educational institutions across the country. At Emma House, we host a number of students from a variety of different programs including Behavioural Science, Social Work, Midwifery, Community & Addictions Support Worker, Early Childhood Development, Masters in Counselling.

Our practicum students are valuable members of the Emma House team and contribute meaningful work that propel our mission and vision.

2021 Educational Partners

- Ambrose University
- CDI College
- Momentum
- Mount Royal University
- SAIT/ABES College
- Reeves College
- ABM College
- University of Victoria
- Columbia College
- Dalhousie University
- Yorkville University
- Lethbridge College
- Academy of Learning Career College
- Sundance College

Our connection with our educational partners is invaluable. The educational institutions listed offer top-tier education to their students and empower them to make positive changes in their communities. We are looking forward to building more connections with educational partners and offering more meaningful practicum placements in the years to come.

CONNECTIONS

COMMUNITY AND INTERAGENCY CONNECTIONS

- Adoption Options
- AISH
- Alberta Adult Health Benefit Program
- Alberta Health Services
- Alcove
- Aventa
- Awo Taan Healing Lodge
- Best Beginning Program
- Brenda Strafford Centre
- Calgary Counseling Centre
- Calgary Drop-In Centre
- Calgary Food Bank
- Calgary Police Service
- Calgary Pregnancy Care Centre
- Calgary Women's Emergency Shelter
- Calgary Youth Physiotherapy (CYP)
- CARYA
- Children's Cottage Society
- Children's Services Alberta
- City of Calgary
- Cob's Bread Kensington
- Connections for Family Society
- Correctional Service Canada
- CUPS Women's Health Centre
- DDRC
- Discovery House
- Eagle's Nest Shelter
- Elizabeth House
- Employment Insurance Canada
- Gems for Gems – Hope's Cradle
- Highbanks House
- Horizon Housing Society
- Income Supports Alberta
- Inn from the Cold
- Leftovers
- Legal Aid Alberta
- Made By Momma
- Metis Calgary Family Services
- Momentum
- Mustard Seed
- Options Plus
- Oxford House
- Parent-Child Assistance Program – McMan Calgary
- Prenatal Outreach Support Team (POST)
- Reset Society
- Rowan House
- Sagesse
- SCOPE
- Second Harvest
- Sonshine Community Services Calgary
- Sunrise Healing Lodge
- The Sorce
- Trellis
- Vecova
- Vulnerable Populations – COVID Response Working Group
- Wheatland Community Crisis Shelter
- YWCA – Sherriff King Home



STATEMENT OF OPERATIONS

- AUDITED

Emma Maternity House Society Statement of Operations - Audited

	Year Ended June 30th	
	2021	2020
REVENUE		
Capital Donations	9,983	1,167
Donations	650,922	163,918
Gifts in Kind	0	2,625
Grant Revenue	272,372	264,207
Interest & Other Income	10,596	143
Fundraising/Events	15,525	0
Resident Fees	18,117	21,149
	\$ 977,515	\$ 453,209
EXPENSE		
Advertising	11,557	6,482
Amortization	30,213	8,543
Bank Charges	1,618	1,745
Employee Benefits	35,972	20,169
Fundraising Costs	290	184
Groceries & Entertainment	20,794	17,698
Insurance	8,295	7,321
Office Exp	18,303	6,826
Professional Fees	34,649	33,346
Program Expenses/Materials	2,528	2,171
Rent	42,400	40,000
Repairs and Maintenance	8,063	5,980
Salaries and Wages	421,200	220,666
Telephone, Internet & Cable	5,162	4,318
Travel	4,760	6,590
Utilities	18,205	8,978
	\$ 664,009	\$ 391,017
Operating Surplus of Revenue over Expenses	313,506	62,192
Gain/(loss) on sale of capital assets	105	-2160
Excess of Revenue over Expenses	\$ 313,611	\$ 60,032

MAJOR DONORS AND SUPPORTERS

Grants and Donations over \$5000



A Special Thanks to:

**The Fowler Family
&
Green Family Foundation**

Anonymous Donor

Stepping Forward



EMMA HOUSE

WEBSITE: WWW.EMMAHOUSE.CA

PHONE: (403)612-2351